



Meeting Summary
Tuesday, November 28th 2023, 2-3pm
Location: NICHE

Our mission: Promote physical activity and good nutrition for every generation living in the greater Wichita area through people, programs, and policies.

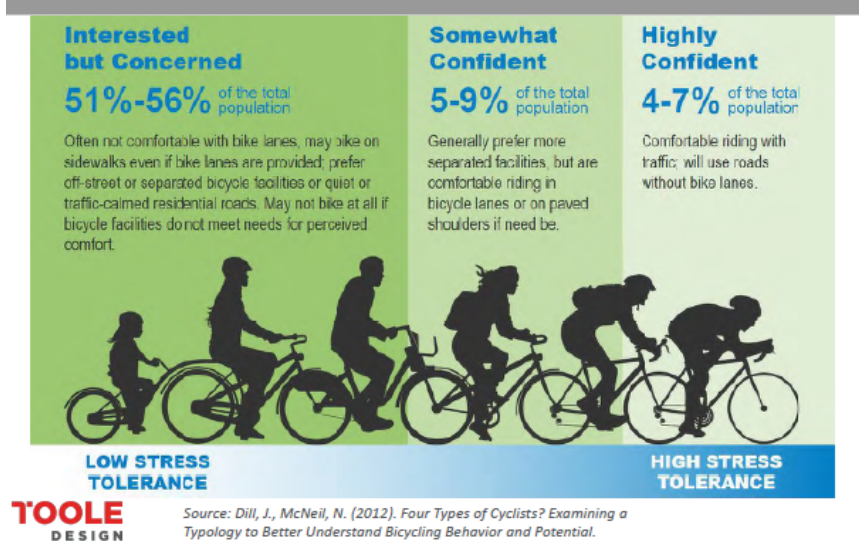
1. **Partner Spotlight:** Lexi Michael, Department Chair/Executive Chef, Culinary Arts at WSU Tech NICHE shared the following:
 - a. NICHE is located in the former Henry's building that was built in the 1940's.
 - b. Mission: to celebrate and enhance our culinary landscape.
 - c. What's next? Continued collaboration with Cargill and others. Culinary classes open to the public.
 - d. 100 students currently enrolled in the 2 year Culinary Associates degree program.
 - e. Facility space available for rent with catering. Check website for additional information.
<https://nicheks.com/>

2. **Coalition Updates**
 - a. The HWC is celebrating 20 years of meetings on January 23, 2024. Location and time to be determined.
 - b. The HWC/Food and Farm Council/KSRE hosted a local Food System Roundtable on November 15th that was well attended. A data walk handout from the event was passed around. The ICT/SC Food and Farm Council meets on Tuesday, December 5th. For meeting information, visit www.wichita.gov/foodplan
 - c. The Working Well Conference speakers are being finalized this month and registration will be open by the middle of January.

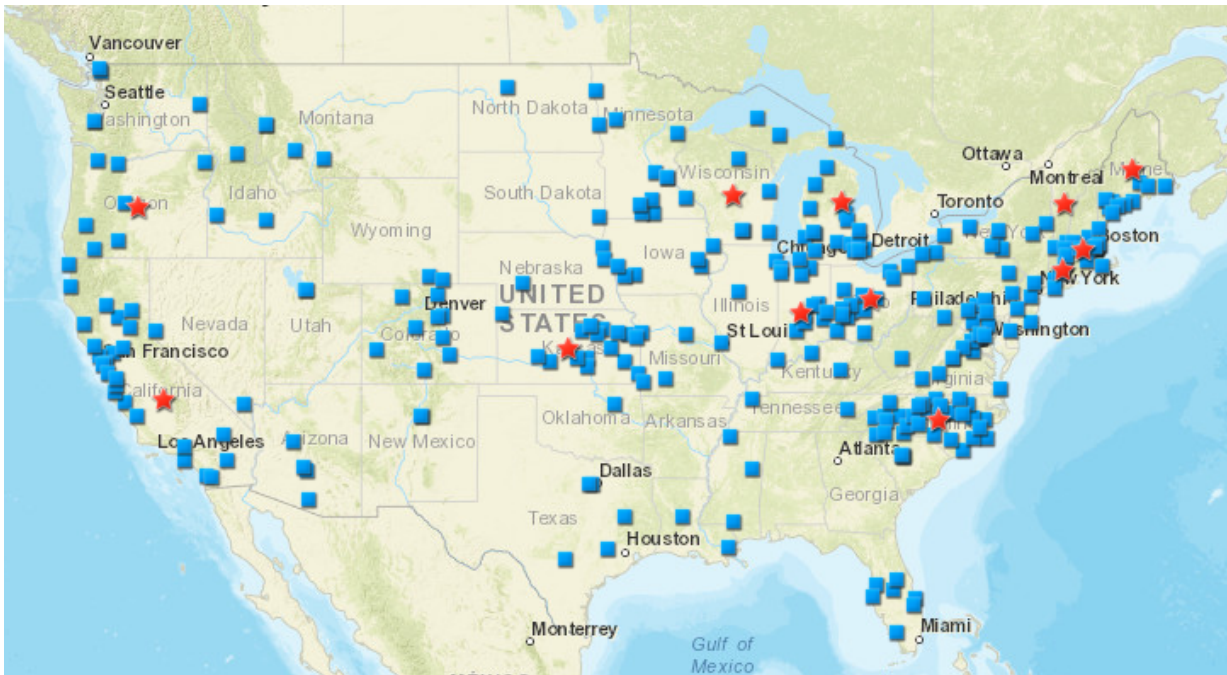
3. **Networking/Good News/Upcoming Activities/Events**
 - a. Wendy at Wichita Family Medicine will be offering DPP starting in January.
 - b. Patty reported that the Wichita Public Schools food drive had record donations.
 - c. The Sedgwick County Conservation District is hosting their annual meeting in February. The theme is "one water".
 - d. Coach Stacey provides coaching in person and virtually.
 - e. The Aetna Community Health Council is partnering with ICT Community Fridge. Contact Daisy Urbina if you want to participate.
 - f. David reported that The Active Age is publishing a fun & fitness section in January, contact him to advertise.
 - g. Shae reported that the Sedgwick County Health Department has published a community calendar. The 1st quarter 2024 classes are posted for chronic disease self management and more.
 - h. Bike Walk Wichita has started promoting their annual Christmas Lights Walk (12/9) and Ride (12/10).
 - i. Contact Craig at the Kansas Food Bank to volunteer at Operation Holiday.
 - j. ICT Food Rescue's Upcycle Kitchen is fully operational.
 - k. Sunflower Community Action is working on transit equity and a grant to provide vaccines to the elderly.
 - l. Sarah Meyers attended representing ICT Tree Huggers and many other organizations.
 - m. Brooke provided an update about the HCSI program. An application for program administrators will be released in January 2024.
 - n. Amy Draut from K-State Research & Extension oversees SNAP Ed which provided FREE education to ages 3-76. Staff members Nancy and Laurie also attended.
 - o. Rebecca reported that a community center is being built starting in 2024.
 - p. KSRE is doing a Kitchen Restore drive in December

- q. Check out the new list of food resources on the HWC page <https://hwcwichita.org/local-food-resources/> This was created because of the work of the SCHD Community Health Improvement Plan Food Access Workgroup. Contact Shelley if you know of resources that are missing.

4. Why We Do What We Do This section of the monthly agenda was added in January 2023 and will continue in 2024. Let Shelley know if you have suggestions to make this information useful to your work.



Toole Design shared this visual through the Wichita Bicycle Plan Technical Advisory Committee at the 11/16/23 meeting.



Map of Food Policy Councils published by Johns Hopkins

Red star = food policy convener

Blue square = food policy council

5. Closing, Call to Action & Completely Random Coalition Facts

- a. Call to action - Network! Share the information you learned!
- b. parkrun inspired completely random and useless coalition fact: Walktober participants: 153 joined Facebook group, 95 joined Strava Club, 192 registered for the weekly newsletter = 440. According to KS Demographics.com, that is the population of Eskridge KS located in Wabaunsee KS

6. NICHE tour!

